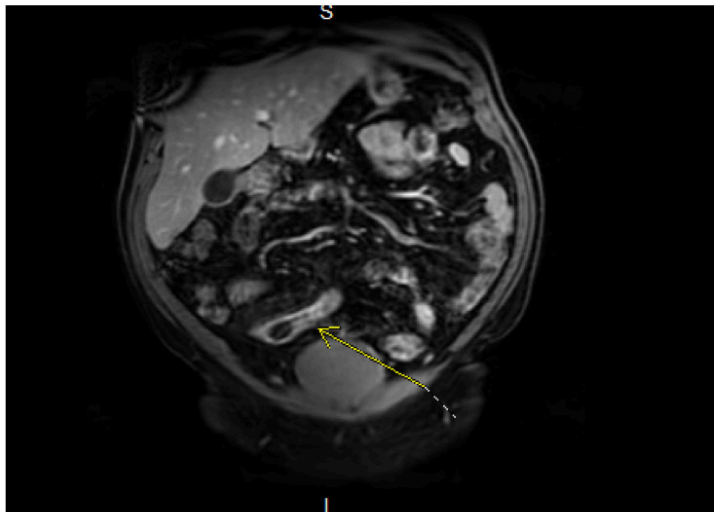


IMAGES

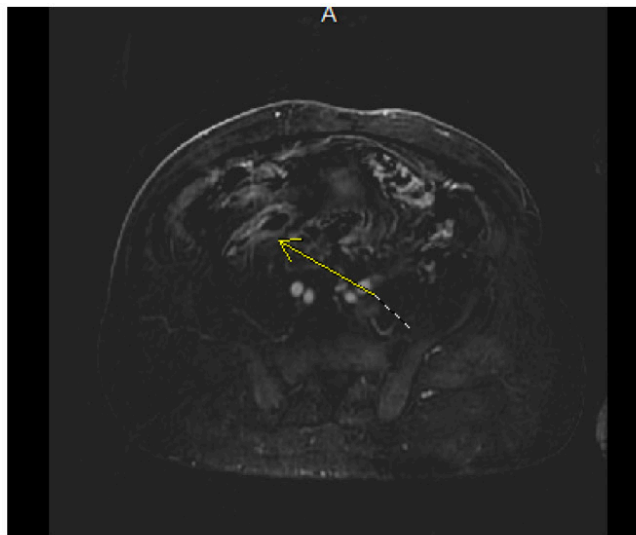
MR Enterography

FOR CROHN'S DISEASE & COLITIS

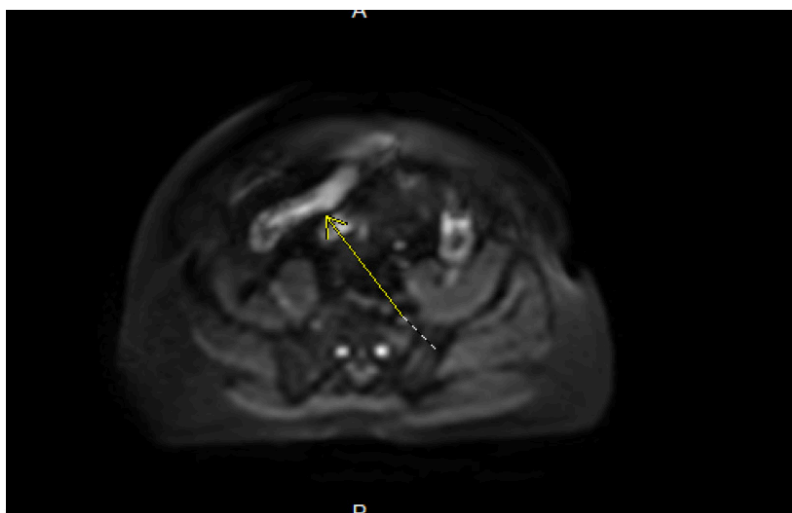
TERMINAL ILEUM SEGMENT



Crohn's Disease. Inflamed hyperenhancing segment of terminal ileum.



Post contrast subtracted image.



Diffused weighted image.

TERMINAL ILEUM



Terminal ileum just proximal to ileocecal valve, without stricture.