

Ideal for those patients who are **claustrophobic or highly anxious** about their MRI experience.

- 270° unobstructed view for a comfortable, pleasant experience
- Lower, wider patient table for easy positioning and better access for wheelchair patients
- Open architecture allows pediatric patient security and comfort
- Easy access to the patient while on the machine, allows the option for a visitor or family member to accompany them



It's excellent for those 'NO-WAY, NO-NEVER' patients who have great anxiety about their MRI experience.

— **Dr. Steve Sweriduk**
Medical Director,
Shields Health Care Group

The first and only
open-sided MRI in Boston.
Only at Shields MRI – Brighton

385 Western Ave., Brighton, MA



Guidelines and ordering information for the new 1.2T high-field open-sided MRI in Brighton

The 1.2T open-sided MRI is ideal for:

- Patients who are highly anxious or claustrophobic
- Patients who are larger and unable to fit comfortably in other machines
- Patients who have previously failed to complete MRI attempts
- Imaging of small bones and joints such as toes, wrists, fingers, and hands

First and Only Open-sided MRI in Boston

NOW AVAILABLE AT SHIELDS MRI – BRIGHTON



This brand-new high-field, open-sided MRI features a broad range of clinical capabilities as well as an accommodating design for those patients especially concerned about space.

385 Western Ave, Brighton, MA
Scheduling lines are NOW open. 1.800.258.4674



1.800.258.4674

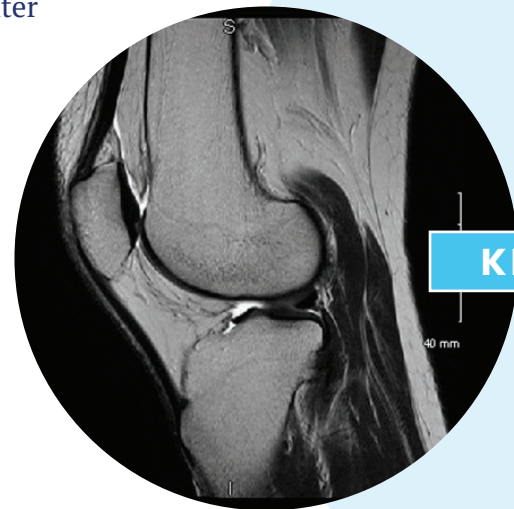
Delivering comfort and clinical accuracy for MSK and orthopedic patients

The accommodating open-sided design creates a comfortable environment for extremity imaging while the high-field strength delivers exceptionally high-quality pictures, particularly good for imaging of small bones and joints such as toes, wrists, fingers, and hands.

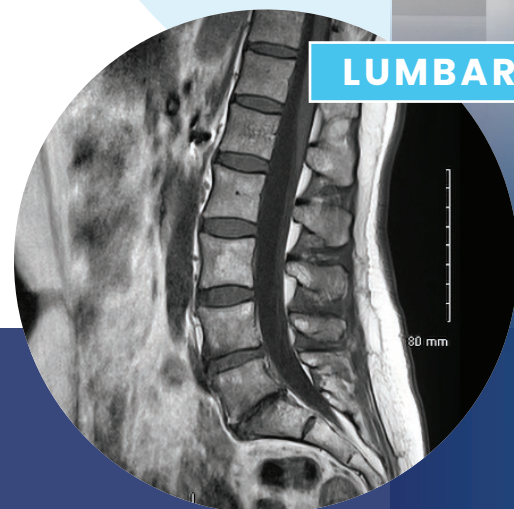
- Wrists and elbows are imaged at the patient's side
- Open design allows for easy positioning during shoulder exams
- Lateral table movement allows easier isocenter positioning for all extremity exams
- Excellent fat suppression for MSK imaging



WRIST



KNEE



LUMBAR



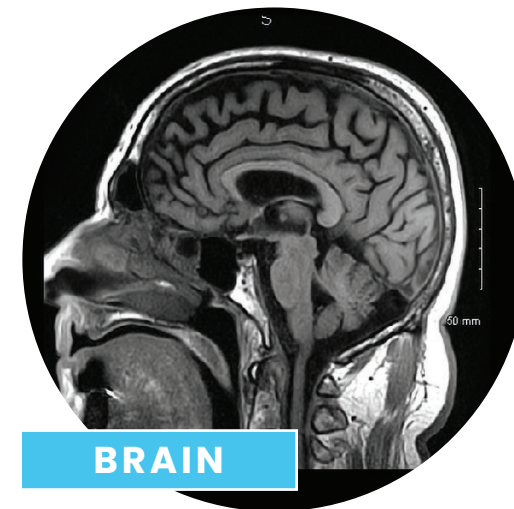
ANKLE



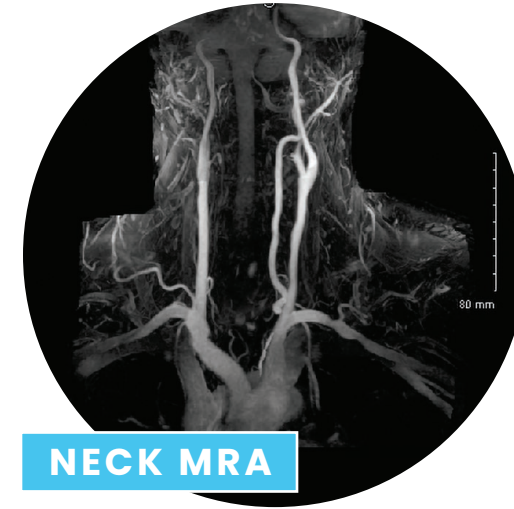
Providing diagnostic confidence and extraordinary patient comfort for Neurological Patients

The 1.2 tesla high-field strength provides the essential level of detail needed for an accurate evaluation of the brain and nerve tissues as well as the spine.

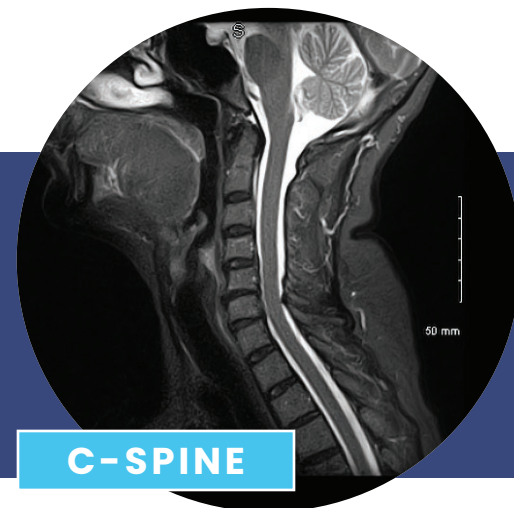
- High-field strength (1.2 tesla) creates detailed, high-resolution images
- Specialized coils permit an open design, reducing claustrophobia as patients are able to see all around the room
- Comfortable design naturally reduces patient motion artifact, yielding diagnostic quality in even the most difficult patients
- Excellent fat suppression for neurological imaging



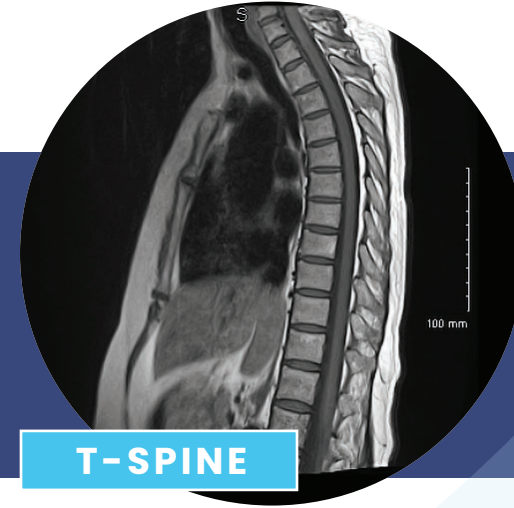
BRAIN



NECK MRA



C-SPINE



T-SPINE



Scheduling lines are NOW open.

1.800.258.4674

385 Western Ave, Brighton, MA